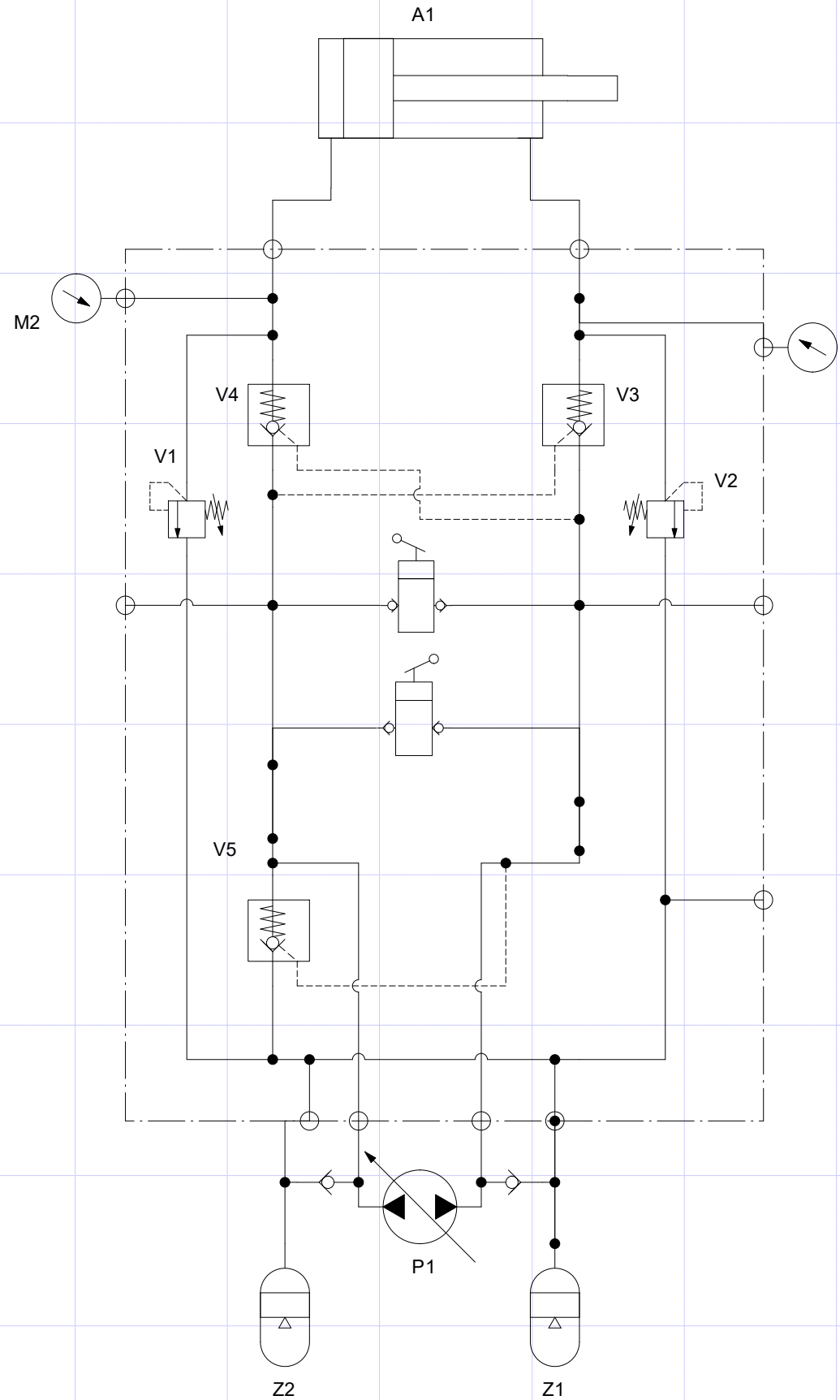


A
B
C
D
E
F
G
H
I
J
K

Component Name	Item Identifier
Variable Relief Valve	V1
Variable Relief Valve	V2
Pilot to Open Spring Loaded Check Valve	V3
Pilot to Open Spring Loaded Check Valve	V4
Pilot to Open Spring Loaded Check Valve	V5
Manifold Boundary Line	z1
Manifold Connection Port	p1
Manifold Connection Port	p2
Manifold Connection Port	p3
Manifold Connection Port	p4
Manifold Connection Port	p5
Manifold Connection Port	p6
Piston-Type Accumulabr	Z2
Bidirectional Motor-Pump	P1
Piston-Type Accumulabr	Z1
Double-Acting Cylinder	A1
Manifold	Z3
Check Valve	V6
Check Valve	V7
Pressure Gauge	M1
Pressure Gauge	M2



PROPRIETARY AND CONFIDENTIAL
 THE INFORMATION CONTAINED IN THIS
 DRAWING IS THE SOLE PROPERTY OF
 NEWTON VALVE ACTUATION SYSTEMS. ANY
 REPRODUCTION
 IN PART OR AS A WHOLE
 WITHOUT THE WRITTEN PERMISSION OF
 NEWTON VAS IS PROHIBITED.



REV	DESCRIPTION	DWN BY	APRV BY	DATE
A	INITIAL RELEASE	KMJ	MPF	2/26/24

DRAWING # 10908
 Title:
**NEWTON DA CLOSED-LOOP
 HYDRAULIC CIRCUIT**